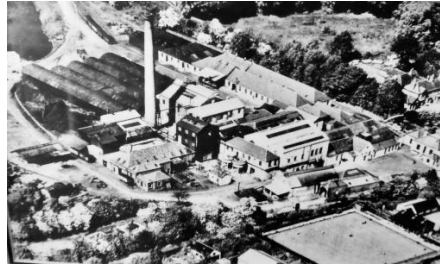
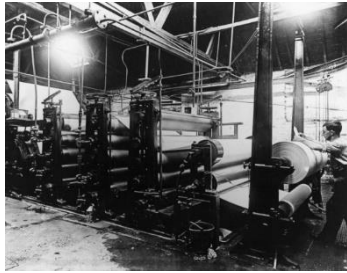


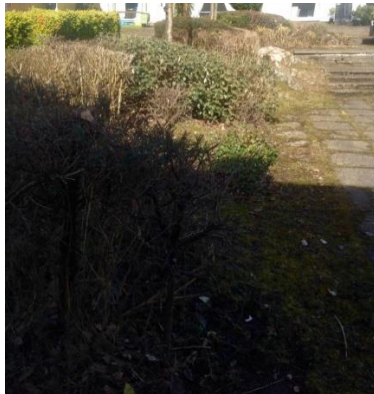
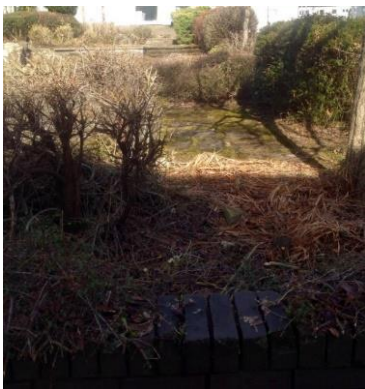


YEAR OF STORIES - THE ITALIAN GARDEN

Allander Road Gardening Group



In 1870 a cotton mill in Milngavie was converted to a papermill called Ellangowan making paper for fine writing and printing for books and cheque books. It eventually closed in 1959 and was demolished in March 1966. A new housing complex was built on the site in the 1970s by Milngavie Council, now East Dunbartonshire Council. *(Information on the Ellangowan Papermill was provided by courtesy of EDLC Archives and Local Studies)* A focal point of the complex was a landscaped area called the **Italian Garden**. It became overgrown and unsightly and Milngavie in Bloom decided to bring it back to being the focal point of the estate where children could play again and social gatherings could take place. A sub-group of MiB (**Allander Road Gardening Group**) was formed with residents, and started re-greening the dark garden and replacing the slabbing.



Pictures of the **Italian Garden** before the work was started

The early work begins



Shrubs and "Roman Paving" are discovered.

The bright garden in summer 2021



The Group join It's Your Neighbourhood campaign and enjoy the mentoring visits, gaining success in early 2022 with Award Level 5 Outstanding and Certificate of Distinction

Please help us with our story.

This is a story about a **solitary bee**. There are over 200 species and they live alone although they often nest close together. They **do not** produce honey, **do not** have a queen and **do not** live in hives. They also tend not to sting. Please **illustrate** each page with crayons and add any sentences you think will fit. On the last page

Where do you think the bee would like to live?

Can you please help the little bee in Dundee?

SOLITARY BEE WEEK

Happy Bee Week!
Bzz Bzz

SOLITARY BEE WEEK

Please help us with our story.

This is a story about a **solitary bee**. There are over 200 species and they live alone although they often nest close together. They **do not** produce honey, **do not** have a queen and **do not** live in hives. They also tend not to sting. Please **illustrate** each page with crayons and add any sentences you think will fit. On the last page

Where do you think the bee would like to live?

5 **Please help us with our story.**

Oh dear, the little solitary bee thought. My living area has nothing to eat with no wildflower meadows or hedges where some of us nest. Even those of us who burrow in the ground are getting trampled on, dug up or run over by machinery. Sadly the little bee decided it was time to move on but before she could choose the direction to go a strong gust of wind blew the little bee high into the air.

Bonnie Dundee IYN

6 **All the little bee wishes for is a lovely peaceful place to stay with lots of simple shaped flowers in yellows, blue, pinks and purples and some hedges, piles of logs or long grasses to rest and shelter in with a little water nearby.**

Can you please help the little bee and draw her the perfect place to stay in Dundee?



Bonnie Dundee's Bee story At our bee event early in the year we found that many adults and children thought all bees were yellow and black, lived in hives with a queen, made honey, and stung. Little was known about **solitary bees** and many thought that if they planted wild flowers then **that was all** they had to do to help bees. We decided to create a story illustrated by children explaining e.g. their differences, seasonal flowers, variety of shapes, places to rest, nest, shelter, a place for water etc. This is a work in progress. TBC.

Our bee story

Can YOU help by drawing and colouring a picture for us?

- 1) Choose the type of bee you would like to draw. (see pictures)
- 2) Choose a part of the story you would like to illustrate. (see list)
- 3) Please write your name, age and contact number on the paper.

Points in the story to illustrate

- A bee flying over fields, houses, roads.
- Flying in or out of a nest in a wall, hollow stem, earth or pile of logs and leaves.
- Landing on flowers to sip the nectar for energy.
- Resting in a fagstone tube flower.
- A bee flying over something that would show it was Dundee.
- A bee flying over rabbits
- A happy bee

Types of bees to draw

Common Carder Bee - brown/ginger colour	Tawny Mining Bee - ginger with thick orange
Red Mason Bee - black face, brown thorax, orange/red abdomen	Ashy Mining Bee - grey/white/black - can adapt to being anywhere
Common Carder Bee - brown/ginger colour	Tawny Mining Bee - ginger with thick orange and black face
Red Mason Bee - black face, brown thorax, orange/red abdomen	Ashy Mining Bee - grey/white/black - can adapt to being anywhere

In the UK we have 1 species of honeybee, 25 species of bumblebees and 240 species of SOLITARY bees.

Solitary bees ...

- Do not live in hives
- serve a queen
- make honey
- swarm and ...

They are not aggressive and hardly ever sting. Honey bees and bumblebees are social bees.



Buckies Roots - Crafty Roots 2022



Tribute to Robbie Burns

Five Panels Outside Care Home



We provided the community with wool and patterns to knit or crochet flowers. In January this year we had our tribute to Robbie Burns. In May we hung five panels outside the Day Room of Parklands Care Home. In July our Coronation Crown hung in Buckie Square for the whole summer. In November our Poppy Cross stood in the Square for Remembrance Sunday. Most of the wool has been donated or bought from local Charity Shops. The Community love our displays and are always asking what are we going to do next. They are also hung in the Buckie Library and accompany us on talks.



Coronation Crown for Platinum Jubilee

Poppy Cross - November 2022



East Haven - Year of Stories 2022

Stories From the Shore

East Haven - July 2022



Welcome to the East Haven Louvre Stories from the Shore



Scotland's Year of Stories
Supported by the Harbour Gallery Carnoustie

**East Haven
Stories from the Shore**
23rd and 24th July 10am -4pm

Exhibition of Paintings and Heritage Bunting
Story Walk 2pm



East Haven Railway Station 1838 - 1967

The little railway station was built on the site of the old post road which linked Carnoustie and Arbroath and effectively cut the village in half. However, it was essential for the economy of the village and transported lobster and crab to top restaurants in London.



The little station also played an important role after WW2 when HMS Pheasant at Hutton was decommissioned. All the aircraft parts were dismantled and taken away on trains for disposal.

Glamis Castle to East Haven Beach



The two young Princesses Elizabeth and Margaret were brought down to East Haven from Glamis Castle in the 1830s. They were able to play relatively unimpeded on the beach where they were left in peace by locals. They enjoyed paddling and rock pooling just as many children do today.



RHS Grow Well Seeds 2022

Caroline's flowers contain antifungal, anti-inflammatory and healing properties. They are an important component of blueberries and lentils.



Story walks were held throughout the year when we shared stories old and new with visitors and local groups. We also held a "Year of Stories weekend in July when we displayed information about East Haven's history and heritage. We communicated many of our stories through paintings which we hung in the public toilets. We involved the whole community and used social media to share our stories too.

FARE LOCHEND COMMUNITY ALLOTMENT

A super busy year we had with weekly visits from our 5 nurseries, 2 primaries & 6 community groups with 100 children per week and 550 visiting monthly. We created a wondrous woodland using shower curtains to cover steel railings, adding evergreens, conifers, heathers, bog and frog ponds, bug hotels, hedgehog homes & pinecone bird feeders. This is group1 from Oakwood



Primary.

We held 4 community Wellness days delivered by Angela of RHS. We celebrated the Queens Platinum Jubilee with around 80 people and made cakes and dishes using our harvests. We created nature art weekly and have a monthly litter pick.



Here is Buchlyvie Nursery with a bumper harvest of rainbow vegetables from their plot. We are composting and making leaf mould in denims





“The Year of Stories” fitted perfectly with what Kinnesswood in Bloom likes to do. We have a number of little wrought iron figures which were initially made for the Ryder Cup celebrations in 2014. This year we repurposed them as famous figures with links to our area.

The figures were placed at appropriate places round the village with a small interpretation panel set in a post beside them, most of these featured a drawing & brief description all created by Portmoak Primary school pupils.

We displayed/published widely this QR code linking to a downloadable trail map & information pack.

Over the winter six figures were dressed by local craft ladies.

Many skills were used: sewing, crochet, felting and drawing.



Our locally connected figures

- A Bronze Age lady carrying a funeral urn
- Mary Queen of Scots who was imprisoned in Loch Leven Castle
- A monk from St Serf’s Island. The monks produced vellum for many years.
- Alexander Buchan, a ground-breaking meteorologist
- Michael Bruce the poet
- Eve Muirhead, Olympic curling champion, a former pupil at our school

North Berwick in Bloom - Year of Stories



We collaborated with East Lothian Council amenities team to plant the historic carpet bed celebrating Robert Louis Stevenson's connection with North Berwick where he spent many summer holidays. The skull and crossbones refers to his famous novel, 'Treasure Island'. Local shops displayed extracts from Scottish stories and poems in their windows.



Our gannet sculpture made of shells, sea glass and pebbles was inspired by Stevenson's novel 'Catriona' set on the Bass Rock, the world famous gannetry off the coast of North Berwick. It was also a poignant tribute to the iconic bird whose numbers were decimated by Avian flu this year. An extract from the novel, written in old Scots, was set in the boat.

In November, we commemorated the work of the Women's Land Army in a Remembrance Display which prompted many passers-by to stop and tell stories about their mothers, aunts and grannies and the agricultural work they did to keep the country supplied with food and timber.



